

## 32 SANDALWOOD MANSION STONE HALL GARDENS LONDON W8 5UR



- ENTRANCE HALL ▫ DOUBLE RECEPTION ROOM
- THREE DOUBLE BEDROOMS ▫ FITTED EAT-IN KITCHEN
- EN-SUITE BATHROOM ▫ FAMILY BATHROOM
- UNDERGROUND CAR PARK ▫ LEISURE FACILITIES & GYM
- 24 HOUR PORTERAGE & LIFT ▫ 24 HOUR ONSITE SECURITY
- LANDSCAPED GARDENS ▫

Guide Price: £2,600,000  
STC

**Ryletts**  
ryletts.com  
**020 7823 8886**  
1 St Catherine's Mews London SW3 2PX



Occupying nine landscaped acres in the Royal Borough of Kensington and Chelsea, this exceptional gated development offers secure parking, 24hr concierge and excellent gym facilities, but is only minutes away from the shops and restaurants of Kensington and South Kensington. Gloucester Road Underground (Piccadilly, District & Circle Lines) and High Street Kensington (District & Circle) are both in close proximity.

This bright spacious three bedroom flat, on the third floor (with lift) overlooking trees, comprises entrance hall, large living/dining room, master bedroom suite, two further double bedrooms and family bathroom.

The Property includes 1 Parking space. Subject to ground rent.

Service Charges -

EPC rating: C

Guide Price: £2,600,000 STC

Ryletts, a trading name of R & C London Properties Ltd, advise prospective buyers that these details are intended to give a fair description of the property, with no responsibility taken for error omission or mis-statement and do not constitute an offer or contract. No representation or warranty is made during negotiations in particulars or elsewhere by any representative or persons acting on their behalf. February 2020.

## 32 Sandalwood Mansion

Approximate Gross Internal Area :-  
124 sq m / 1335 sq ft

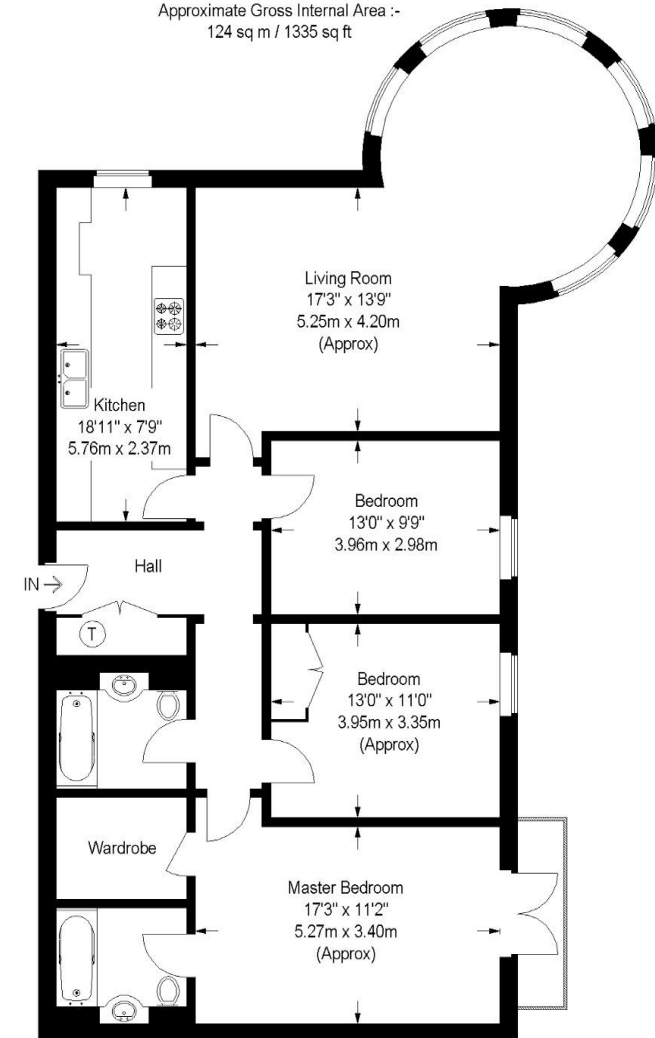


Illustration for identification purposes only,  
measurements are approximate, not to scale.  
FloorplansSketch.com © 2011 (ID13145)

**Ryletts**  
ryletts.com  
020 7823 8886  
1 St Catherine's Mews London SW3 2PX